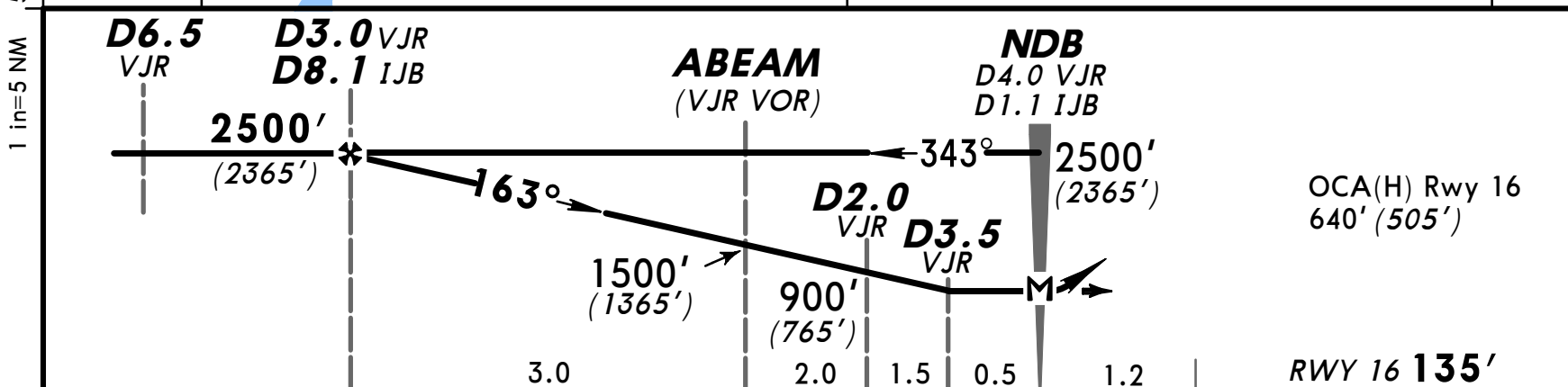
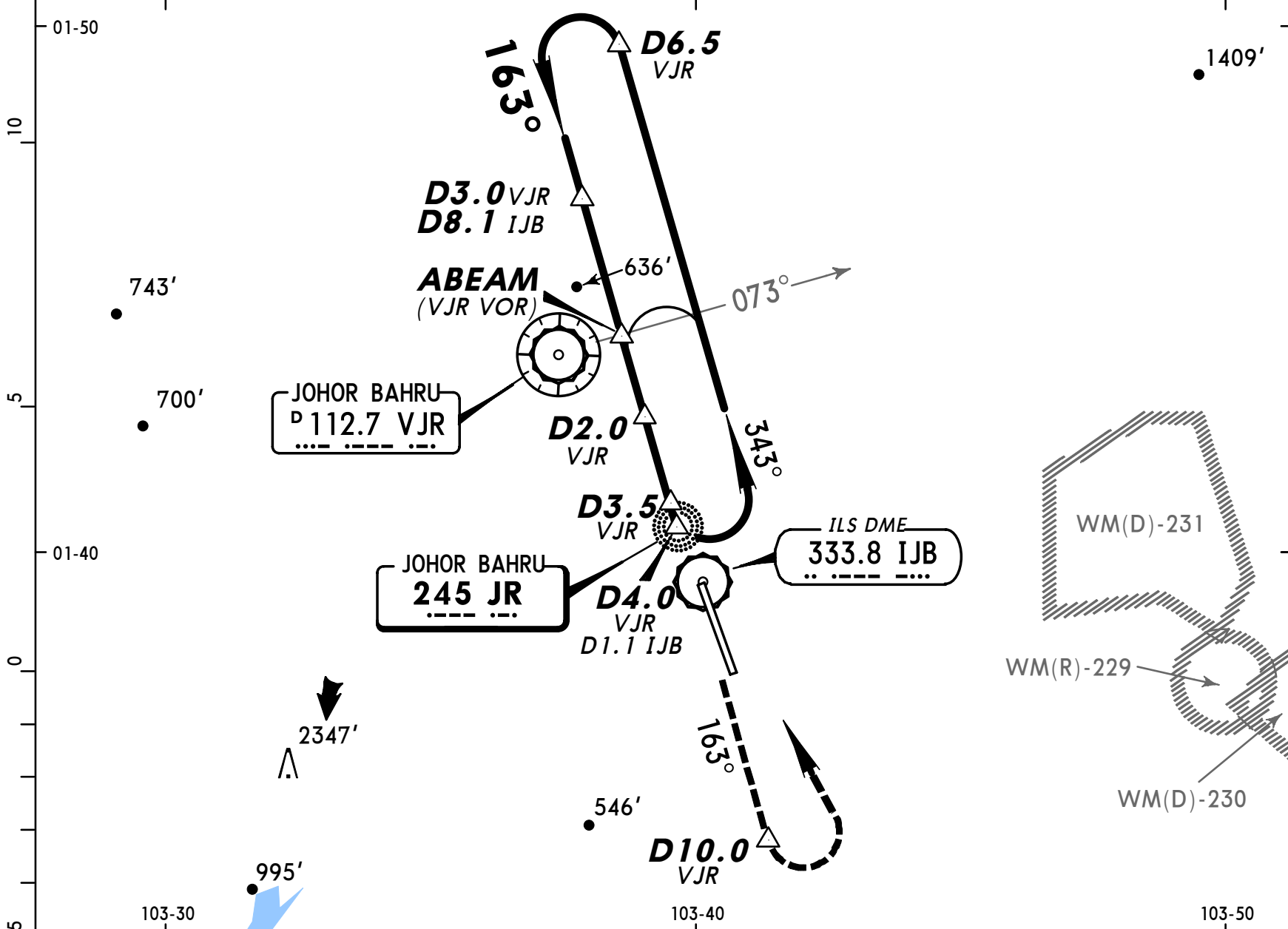


WMKJ
SULTAN ISMAIL

22 DEC 00 (16-1)

JEPPESEN JOHOR BAHRU, MALAYSIA
NDB DME Rwy 16

*ATIS 126.6		*JOHOR Approach 124.7		*JOHOR Tower 122.5		*Ground 121.8	
NDB JR 245	Final Apch Crs 163°	Minimum Alt D3.0 VJR 2500' (2365')	MDA(H) 640' (505')	Apt Elev 135'	<p>MSA JR NDB</p>		
MISSED APCH: Climb on 163° to 1300' by D10.0, turn LEFT and return to JR NDB at 2500', or as directed by ATC.							
Alt Set: hPa Rwy Elev: 5 hPa Trans level: FL 130 Trans alt: 11000' (10865') 1. Procedure based on 185 kts IAS.							



Gnd speed-Kts	70	90	100	120	140	160	PAPI ALS	1300'	on 163° by D10.0	LT
Descent Gradient 5.0%	354	456	506	608	709	810				
MAP at D4.0 VJR D1.1 IJB										

STRAIGHT-IN LANDING RWY16				CIRCLE-TO-LAND			
MDA(H) 640' (505')							
ALS out				Max Kts	MDA(H)		
A			1200m	100	670' (535') - 1900m		
B			1600m	135	670' (535') - 2800m		
C			1600m	180	1050' (915') - 3700m		
D			2400m	205	1050' (915') - 4600m		